



**MAKING BIG  
IMPRESSIONS  
IS OUR BUSINESS**

PRINTED MESH CATALOGUE | ISS. 1

**FENCE**  
**BANNER MESH**





# CONTENTS

**04**    **PREMIUM**  
PRINTED FENCE FABRIC

**06**    **OPEN WEAVE**  
PRINTED FENCE FABRIC

**08**    **VINYL BANNER**  
HOARDING WRAP

**10**    **SITE SIGNAGE**  
CUSTOM MULTI-SIGNS

**14**    **SUPPLYING ARTWORK**  
SPECIFICATIONS & GUIDELINES

# PREMIUM PRINTED FENCE FABRIC

Our Premium Printed Fence Fabric is the solution for your highest privacy needs, along with high profile branding exposure. The fabric improves the image of your construction site, car yard or event and doubles as an eye-catching marketing tool to every person that comes past. It is also an effective option for hoarding wrap.

Our Printed Banner Mesh is designed specifically to have a long shelf life, be rolled and un-rolled and transported between sites. An excellent durable option, the premium quality mesh has a site life of up to 4 years.

The printed banner mesh is an excellent receptive base for our absorb-plus inks giving the ability to print both elaborate designs as well as block printing. No matter how big or colourful your design, it will transfer accurately to our premium mesh - A good design makes a world of difference to improving your image.

**Discuss with us stocking and consignment options.**

## ALL PRINTING AND FINISHING IS COMPLETED IN-HOUSE.

This allows us to oversee the quality of every print and ensures each job is completed within your required timeline.

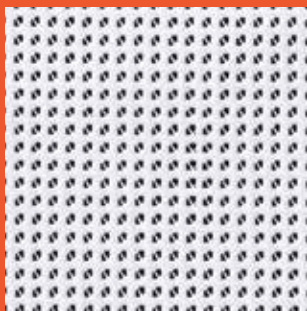


### FEATURES

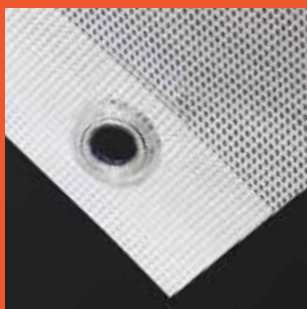
- Option of 1.6m(W) or 1.8m(H) x 50m(L)
- Easy to handle
- Weight - 260gsm
- UV treated polyester mesh
- 80% Material, 20% air breathability
- Reinforced strip welded / folded edge banding
- Stainless steel or plastic eyelets every 1m
- Option of Wind Slits
- Partial to full print coverage on white fabric
- 80% Blockout
- Fully compliant with all OH&S requirements
- Fire Retardant mesh available



Delivers the best privacy, print quality and durability.



Close weave for maximum print image



Eyelets on every metre

The Premium Banner Mesh is an applicable product for our “**Gold Service**”.

**THE BENEFITS OF THIS ARE:**

- Ease of Site Purchasing.
- 5-10 rolls of your company branded stock kept at Jaybro Warehouse’s across Australia.
- Removes all production lead times, immediate despatch for <8hrs delivery in metro areas.
- Takes out the burden of planning ahead for your site personnel.

*Larrara*

Barangaroo

# OPEN WEAVE PRINTED FENCE FABRIC

Our Open Weave Printed Fence Fabric is the solution for high wind or coastal exposed sites, or situations where the wind is a concern. The fabric prints with the same high quality as the Premium, but the 50% blockout allows wind passage without acting as a sail.

Our Printed Fence Fabric is designed specifically to have a long shelf life, be rolled and un-rolled and transported between sites. The Open Weave Mesh has a site life of up to 2 years.

The Open Weave Banner Mesh is an excellent receptive base for our absorb-plus inks giving the ability to print both elaborate designs as well as block printing. No matter how big or colourful your design, it will transfer accurately to our Open Weave Mesh.

**Discuss with us stocking and consignment options.**

## ALL PRINTING AND FINISHING IS COMPLETED IN-HOUSE.

This allows us to oversee the quality of every print and ensures each job is completed within your required timeline.



### FEATURES

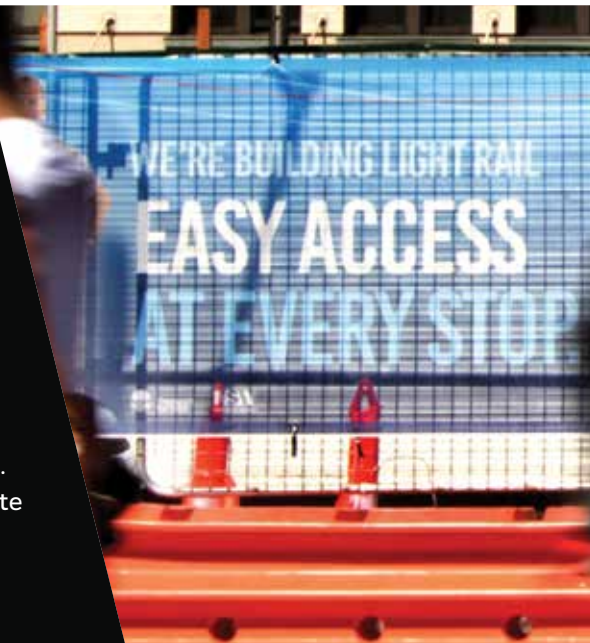
- Option of 1.6m(W) or 1.8m(H) x 50m(L)
- Easy to handle
- Weight - 200gsm
- UV treated polyester mesh
- 50% Material, 50% air breathability
- Reinforced strip welded / folded edge banding
- Stainless steel or plastic eyelets every 1m
- Option of Wind Slits
- Partial to full print coverage on white fabric
- 50% Blockout
- Fully compliant with all OH&S requirements
- Fire Retardant mesh available



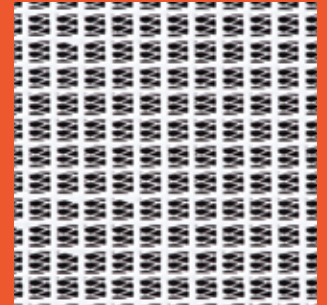
The Open Weave Printed Fence Fabric is an applicable product for our **“Gold Service”**.

#### THE BENEFITS OF THIS ARE:

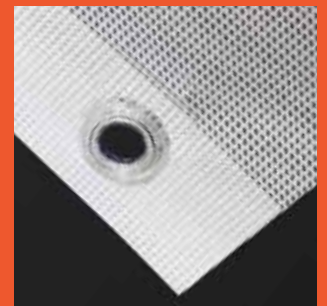
- Ease of Site Purchasing.
- 5-10 rolls of your company branded stock kept at Jaybro Warehouse’s across Australia.
- Removes all production lead times, immediate despatch for <8hrs delivery in metro areas.
- Takes out the burden of planning ahead for your site personnel.



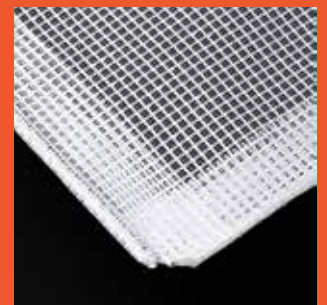
# Best for High Wind Exposure.



Close weave for maximum print image



Eyelets on every metre



Optional 6mm rope edging



# VINYL BANNER HOARDING WRAP

Our vinyl hoarding wrap is a fantastic solution for branding on timber or flute hoarding. The vinyl prints with incredible quality allowing for the most intricate marketing designs to be used.

The vinyl is designed specifically for install using sail track, and provides a smooth clean finish once installed.

## FEATURES

- ❑ Custom heights & lengths available, no minimum order qty
- ❑ Weight – 440gsm
- ❑ UV treated PVC vinyl
- ❑ Kedar hemming
- ❑ Option of hemming with eyelets
- ❑ Partial to full print coverage on white vinyl
- ❑ 100% Blockout



Kedar Hemming

WE HAVE SEVERAL HIGHLY EXPERIENCED INSTALL TEAMS, THUS ENABLING US TO DELIVER YOUR PROJECT FROM START TO FINISH – NO STRESS!





High quality printed vinyl banner to provide a professional finish to your hoarding.



# CUSTOM SITE MULTI-SIGNS

Do you currently have multiple signs on each site?  
Why not compile them on one sign

Print full colour graphics and photos on any substrate you desire. Also have your custom designs available through your own unique online ordering program.

**Call now! Bulk quantities reduce your cost.**



**ALL PRINTING AND FINISHING IS COMPLETED IN-HOUSE.**  
This allows us to oversee the quality of every print and ensures each job is completed within your required timeline.

**FEATURES**

- ❑ Custom size available
- ❑ Standard sizes (mm):  
300x225, 450x300, 600x450  
900x600, 1200x900, 2400x1200
- ❑ Substrate available:  
Poly, Aluminium, Colourbond, Corflute, Ply, Alupanel



# SITE SPECIFIC HEALTH & SAFETY RULES

**EMERGENCY PROCEDURE**

**EMERGENCY CONTACT NUMBERS**

**AMBULANCE POLICE FIRE SERVICE**

**000 or 112**

Poisons Information Centre 131 129  
EPA Pollution Hotline 1300 130 372  
Telstra 132 203  
Electrical Emergency 131 588  
Gas Emergency 132 908  
Water Emergency 132 090  
WorkCover NSW 131 050  
HIA Safety Services 1300 650 620

**SITE RULES**

**DANGER CONSTRUCTION SITE DO NOT ENTER**

you are RESPONSIBLE for your OWN SAFETY



**XENITH CONSTRUCTIONS**

**0438 468 470**

BUILDERS LIC. 207796C ABN: 98 130 454 723

**CONDITIONS OF ENTRY**

All work must be carried out in accordance with XENITH CONSTRUCTIONS SITE SAFETY RULES. Sub Contractors & Trade Personnel must carry out a risk assessment in accordance with occupational health & safety requirements before commencing work. All waste must be placed in the waste compound provided. Siltation barriers must be checked & repaired where necessary at the end of each day.

**DANGER**

**CONSTRUCTION SITE Entry to this building is Restricted to Authorised Personnel only.**

**THINK SAFETY**

Sub Contractors & Trade Personnel are to maintain a safe workplace & beware of any dangerous situations that may occur. Access to the site must be via the all weather access crossing only. THE SITE MUST BE SECURED WHEN LEAVING.

**Jaybro**  
The Civil Supply Experts

**Bannermesh**

**woollam CONSTRUCTIONS**

Easy to order  
Browse Light Customer Service Representative  
Phone 02 9208 9400  
Email [Sales@woollam.com.au](mailto:Sales@woollam.com.au)

Brand Expression Guidelines  
CONSIDER IT DONE

**woollam CONSTRUCTIONS**  
Site Branding Guidelines

**Health & Safety**

SAI GLOBAL

**Certified System**

Quality ISO 9001

**SAFETY FOOTWEAR MUST BE WORN ON THIS SITE**

**SAFETY HELMETS MUST BE WORN ON THIS SITE**

**HIGH VISIBILITY CLOTHING OR VEST MUST BE WORN IN THIS AREA**

**EYE PROTECTION MUST BE WORN IN THIS AREA**

**HAZARD PROTECTION MUST BE WORN IN THIS AREA**

**NO SMOKING**

**NOTICE ALL VISITORS MUST REPORT TO THE SITE OFFICE BEFORE ENTERING THIS SITE**

**NOTICE ALL WORKERS MUST BE SITE INDUCTED BEFORE COMMENCING WORK ON THIS SITE**

**NOTICE ALL ELECTRICAL LEADS AND POWER TOOLS MUST BE INSPECTED AND TAGGED BEFORE BEING USED IN THIS SITE**

**NOTICE ALL SAFETY, GUARD AND RISK TAGS INCIDENTS MUST BE REPORTED TO THE SITE SUPERVISOR**

## Why not take advantage of our Signage Ordering guides.

### THE BENEFITS OF THIS ARE:

- Unique product codes and interactive PDF order form for ease of purchasing
- Keep a hold on your branding expenditure by sourcing through one supplier
- Company branding is consistent from project to project
- Compilation of all the signage required to set your sites up

**SCAFFOLD ERECTION IN PROGRESS DO NOT USE**

**woollam CONSTRUCTIONS**

**NO SMOKING**

**woollam CONSTRUCTIONS**

**woollam CONSTRUCTIONS**

**07 4720 0200** (VIC) 001243

**24 HOUR CONTACT**

**SITE SAFETY RULES**

All workers must comply with the work methods, plant and equipment, safety and control documents and have site safety rules. Failure to do so will result in disciplinary action.

**SAFETY INDUCTION**

All workers must be inducted on site before commencing work. Induction must be conducted by a qualified person. Induction records must be maintained and made available for inspection. Induction records must be kept for a minimum of 12 months.

**SAFETY DOCUMENTS**

All workers must be provided with the following documents: Job Safety Analysis (JSA), Risk Assessment, Method Statement, Permit to Work, and all other documents required for the safe execution of the work.

**SAFETY DOCUMENTS**

All workers must be provided with the following documents: Job Safety Analysis (JSA), Risk Assessment, Method Statement, Permit to Work, and all other documents required for the safe execution of the work.

**SAFETY DOCUMENTS**

All workers must be provided with the following documents: Job Safety Analysis (JSA), Risk Assessment, Method Statement, Permit to Work, and all other documents required for the safe execution of the work.

**DANGER CONSTRUCTION SITE NO UNAUTHORISED ACCESS**

**NOTICE ALL VISITORS MUST REPORT TO SITE OFFICE**

**DANGER HOT WORKS IN PROGRESS**

**woollam CONSTRUCTIONS**

**VISITORS MUST REPORT TO SITE OFFICE**

**woollam CONSTRUCTIONS**

**EMERGENCY ASSEMBLY POINT**

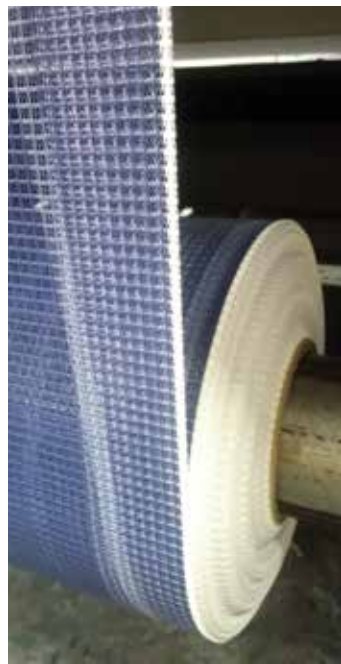
**woollam CONSTRUCTIONS**

# Our printing is all done in-house

meaning we can project manage each order effectively as it moves through the stages of production.

Jaybro has a large motivated team dedicated to making sure your order is done correctly and on time every time.



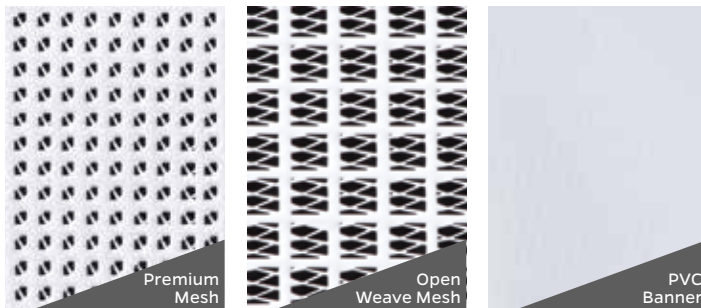


# HOW TO ORDER

## 1 SELECT THE MATERIAL THATS RIGHT FOR YOUR PROJECT

We have 3 types of material to choose from, each has slightly different print and durability characteristics. We recommend Open Weave Mesh if your site is wind exposed. Where you need superior privacy, print quality and durability we recommend Premium Mesh.

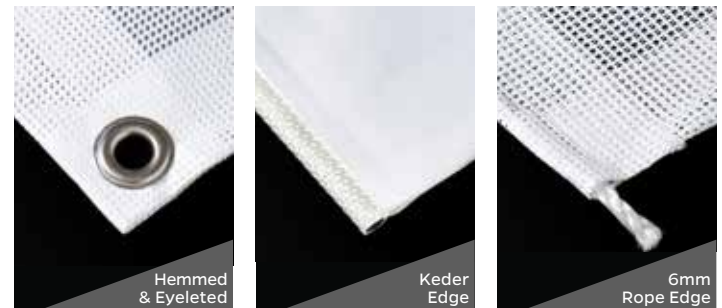
SPECIFICATIONS	PREMIUM PRINTED FENCE FABRIC	OPEN WEAVE FENCE FABRIC	VINYL BANNER
Code	48-PFFP	48-PFFOW16	48-PFFCPSB
Print Roll Size^	50 x 1.6/1.8m	50 x 1.6/1.8m	Custom
Fabric %*	260gsm/80%	200gsm/50%	100%
Durability*	4yrs	2 yrs	4 yrs
Print Quality	Very high	High	Very High



## 2 SELECT THE FINISH FOR FIXING & FITTING

While some finishing techniques are only available with certain materials it's important to consider how your banner will be installed to determine the finishing options best for your project.

FINISH OPTIONS	PREMIUM PRINTED FENCE FABRIC	OPEN WEAVE FENCE FABRIC	VINYL BANNER
Hemmed & Eyeleted	■	■	■
Keder Edge	■		■
6mm Rope Edge		■	
No Finishing		■	



- ▲ Full ink coverage is required to print to the full area of a roll. Where this is not required, specify Block Printing to cover up to 70% of the fabric area.
- \* Mesh Fabric % indicates the overall percentage of printable material, the lower the percentage the more aerated the fabric.
- + Durability indicates expected life span of the banner material and print under average weather conditions but does not cover damage caused by high winds, extreme weather events or inappropriate installation.



Phone **1300 885 364** and speak to our staff on the solution that suits your situation or email [sales@fencebannermesh.com.au](mailto:sales@fencebannermesh.com.au) with your design files, we will email you a quotation for review.

## 3 SUPPLYING ARTWORK SPECIFICATIONS & GUIDELINES

Whether you plan to supply us with logos and images to produce a design for you, or provide ready to print artwork, please ensure you follow our artwork guidelines for the best print results.

### SUPPLYING FILES FOR US TO CREATE ARTWORK

- 1 Supply logos as vector files – .pdf or .eps formats.
- 2 All images supplied as high resolution jpeg files at 10% of actual print size at 300dpi.
- 3 All text via email or in a Word doc file

### SUPPLYING PRINT READY ARTWORK

- 1 Create artwork using Illustrator or CorelDraw
- 2 Set artwork dimensions to 1/10 scale (10m = 1m)
- 3 Maximum sizes:
  - PVC Banner**
  - Trim: 50m x 5m (artwork: 5000 x 500mm)
  - Print area: 48m x 5m (artwork: 4800 x 500mm)
  - All Mesh/Fabric Materials**
  - Trim: 50m x 2.4m (artwork: 5000 x 240mm)
  - Print area: 50m x 2.36m (artwork: 5000 x 236mm)
- 4 No bleed or crop marks should be set
- 5 All colours to be set to CMYK (RGB or spot colours are not accepted)
- 6 All images should be embedded into artwork as CMYK tif files at a minimum of 300dpi and a maximum of 450dpi. Where possible, crop the images to the desired size, avoid scaling of images in the artwork program
- 7 All text should be converted to paths/outlines or fonts
- 8 All vector logos should be pasted into the artwork (image based logo files are not accepted)
- 9 Avoid using complex or multiple 'effects' on text or graphics. If effects are used, 'flatten layers' before saving pdf
- 10 All artwork should be saved and supplied as an editable pdf at a minimum of 300dpi

1. While every attempt is made to produce your artwork to match the required colours and images as supplied, there may be some variations depending on the material you choose to print on and the scale to which you print.
2. Where a specific corporate colour is required to match precisely, a print sample can be created on request to approve prior to final printing at an additional cost. Please note that we use a CMYK printing process and matching PMS colours precisely is not possible.
3. The sharpness of images is reliant on the quality of the images you supply. We take no responsibility for the results for the quality of reproduction when images are not supplied to our required specifications.

## 4 PROOF & PRINT QUALITY CONTROL

Once your artwork has been received we can either print it directly or provide you with a proof for your approval.

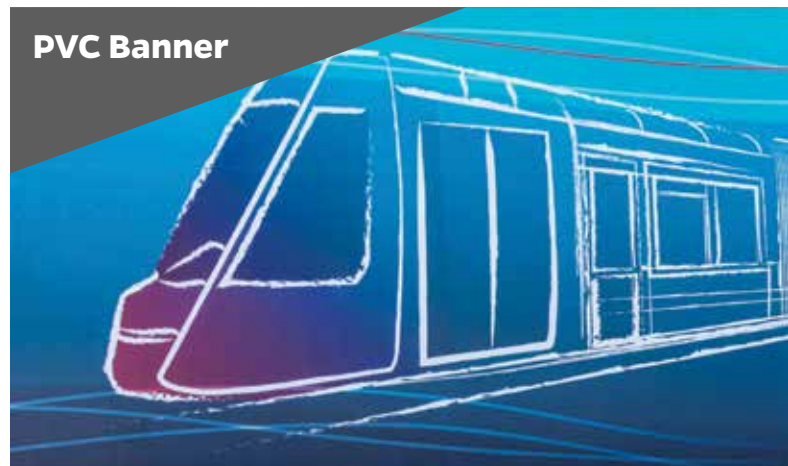
### Premium Mesh



### Open Weave Mesh



### PVC Banner



WE'RE BUILDING LIGHT RAIL  
EASY ACCESS  
AT EVERY

 **FENCE**  
BANNER MESH

1300 885 364

[fencebannermesh.com.au](http://fencebannermesh.com.au)

[sales@fencebannermesh.com.au](mailto:sales@fencebannermesh.com.au)

29 Penelope Cres, Arndell Park NSW 2148